



Summerfields

Rose Retreat & Spa





Luxury Rasul for 1 A therapist will assist you 30min R 470

for 2 45min R 600

Start this do-it-yourself treatment by exfoliating with a *Litchi & Rose Salt Scrub*, then apply a *Rose Clay Mud Mask* and enjoy a *Steam Session* to nourish and soften your skin. Retain the softness with an application of *Rose Body Butter* afterwards.

Steam Session R 170

Jacuzzi R 200

Executive Stress Relief 60min R 650

90min R 965

Let your therapist guide you to complete relaxation with some breathing exercises, followed by a *Hand & Foot Treatment*. Complete the experience with a *Back, Neck & Shoulder Massage*. This is sheer luxury!

Coffee Body Exfoliation 2hrs R 1300

without the Macadamia Massage 75min R 750

Start with a 20min *Rose Quarts Steam Session* in preparation for the invigorating coffee scrub experience, leaving your skin naturally soft. Rinse off with the warm water of the *Vichy Shower*. This is followed with the delight of a hot *Macadamia Compress Full Body Massage*.

Swedish Full Body Massage 60min R 720

Back & Neck Massage 30min R 490

Deep Tissue Massage 60min R 830

Aromatherapy Full Body Massage 60min R 990

Bring about well being with a blend of essential oils targeted to your body concerns. You may choose from a blend for Relaxation, an Invigorating blend or a blend to counter Exhaustion.

Soy Candle Massage 60min R 990

You are massaged with the melting wax of a *Soy Candle* which has *Aromatherapy* as well as heat benefits and is your gift to take home after the treatment.

Summerfield Stone Massage 60min R 830

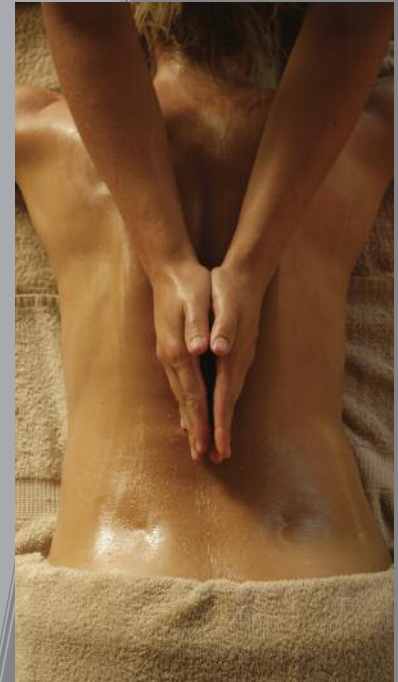
Choose between *Hot Basalt Stones* for the cooler days or icy *Cold Rose Quartz* to chill from the Lowveld heat.

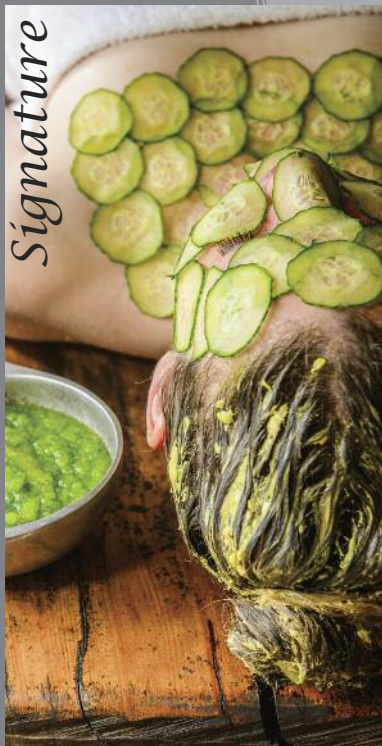
Reflexology 45min R 490

Experience how this massage technique performed on the feet relieves tension throughout, relaxes the body and mind and brings back both into balance.

Add-On's R 150

You may request some Hot/Cold Stone or Soy Candle enjoyment to be added to any massage.





Summerfields Soap Massage & Exfoliation

2hrs R 1100 p/p

Start this treatment with a 20min **Rose Quarts Steam Session**. You will receive a **Dry Body Brushing** which exfoliates and softens the skin. This is followed by an invigorating **Soap Massage**. A bubble and foam experience to remember! You will be rinsed off with the warm water of the **Vichy Shower** and end off the session with an application of our aromatic **Rose Body Butter** leaving you feeling well rejuvenated. This treatment is perfectly suited as a couples experience.

Summerfields Soothing Relief

45min R 600

Regardless whether you have sensitive, irritated or sunburnt skin, feel the relief and cooling effect of our **Cucumber & Banana Leaf Wrap**, followed by a nourishing application of **Rose Body Butter**.

Summerfields Natural Signature Facial 90min R 910

Indulge in this unique Summerfields facial where only natural ingredients are used to cleanse, exfoliate and nourish your skin. The facial will be preceded by a 30min back and neck massage, commence with a hot compress and natural products best suited for your skin type. Receive either a scalp or foot massage while the mask is left on to soften your skin and aid in its natural benefits.

Charlotte Rhys Facial

60min R 720

Experience the feeling of fruit acids as they renew, soften and sooth your skin. Products to best suit your individual complexion will be selected and used to achieve the results you are opting for.

Summerfields Packages

All our packages include coffee, tea, sparkling wine at the spa plus a main course meal in our River Café before or after the treatments.

Summerfields Journey for Winter 3.5hrs R 2400

Start this session with a 10min *Rose Quartz Steam Session*. After experiencing a full body *Coffee Exfoliation*, you are wrapped with rose petals and macadamia oil in banana leaves to smooth and hydrate the skin. While so cocooned, you will receive a *Natural Signature Facial* and have the treatment end off with a *Macadamia Compress Full Body Massage*.

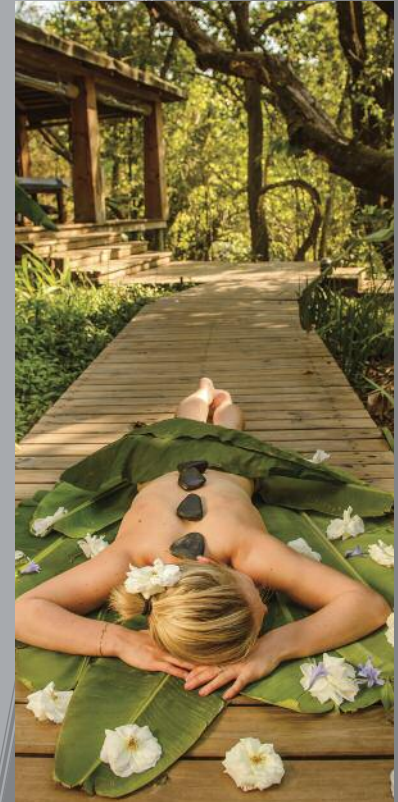
Summerfields Journey for Summer 3.5hrs R 2400

(Please bring your own swimwear)

This begins with a *Hydro Walk* through different volumes and temperatures of water. After experiencing a full body *Coffee Exfoliation*, you are wrapped with rose petals and macadamia oil in banana leaves to smooth and hydrate the skin. While so cocooned, you will receive a *Natural Signature Facial* and have the treatment end off with a relaxing *Full Body Swedish Massage*.

4x4 Men's Package 2.5hrs R 1100

Enjoy a local beer in the restorative nail lounge overlooking the Sabie river while you are spoiled with the luxury of a *Manicure, Pedicure and Scalp Massage*.





A Touch of Nature

4-6hrs

R 2900

Allow our spa therapists, with the help of Mother Nature to show you the path to inner healing. The treatment begins with a *Coffee Exfoliation* before you are wrapped in banana leaves, cocooned in papaya pulp and rose petals. Lying in this blissful state, receive a *Natural Signature Facial* leaving your skin rejuvenated from top to toe without encountering any chemical products. The luxurious experience continues with a *Full Body Aromatherapy Massage* and ends with a *Mini Manicure & Pedicure*.

Eden Romantica Couples Package 2hrs R 2600 / couple

(Please bring your own swimwear)

Whether it's a special occasion or merely a celebration of love, we guarantee total relaxation and harmony in the treatment room. Begin your seductive journey with a relaxing *Back & Neck Massage*, followed by a *Scalp Massage* and end off with a *Hand & Foot Treatment*. Then enjoy our signature hydrotherapy experience, the *Hydro Walk*, that will take you to the *Jacuzzi* where you enjoy a fruit platter and a bottle of sparkling wine in privacy. On your departure stop at our quaint little shop at the entrance to receive a complimentary bunch of roses. (t.c.a.)

Charlotte Rhys Package

3.5hrs

R 2100

This includes a detoxifying salt body polisher followed by a mask application. Whilst wrapped in the mask your blood circulation will improve, thus stimulating and aiding body rejuvenation. Receive a Charlotte Rhys facial while wrapped with products best suited for your skin type. End the treatment off with a *Full Body Massage* with natural Macadamia oil.

<i>Manicures</i>	<i>Gelish Deluxe for Hands</i>	90min	R 380
	<i>Gelish Express for Hands</i>	60min	R 310
	<i>Deluxe Fiesta Manicure</i>	60min	R 440
	<i>Express Manicure</i>	30min	R 310

<i>Pedicures</i>	<i>Gelish Deluxe for Feet</i>	90min	R 460
	<i>Gelish Express for Feet</i>	60min	R 390
	<i>Deluxe Florentine Pedicure</i>	60min	R 510
	<i>Express Pedicure</i>	30min	R 380

<i>Beauty Add-Ons</i>	<i>French paint with Mani/Pedi</i>	15min	R 75
	<i>French paint</i>	45min	R 250
	<i>14 Day Non-Chip polish (Gelish)</i>	45min	R 145
	<i>Soak Off of existing Gelish</i>	60min	R 145
	<i>Re-Varnish</i>	30min	R 210
	<i>Hand or Foot Massage</i>	20min	R 310
	<i>Paraffin Dip</i>	20min	R 160
	<i>Medi Heel for dry cracked heels</i>	20min	R 150
	<i>Waxing</i>	30min	R 150-250
	<i>Brow Shape or Tint</i>	15min	R 75
<i>Lash Tint</i>	15min	R 100	



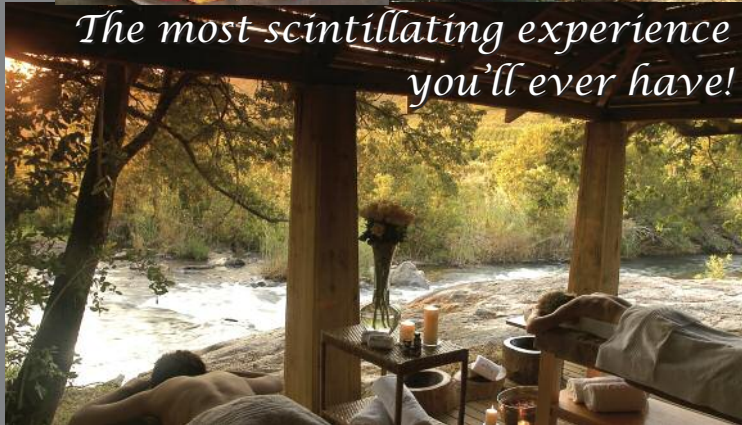
Nail Lounge



Summerfields Rose Retreat & Spa



*The most scintillating experience
you'll ever have!*



Barefoot Luxury

Reservations: 087 231 0112
Spa Mobile: 082 610 4708
spa@summerfields.co.za
www.summerfields.co.za

Summerfields Rose Retreat & Spa

Hazyview, Mpumalanga

5km outside Hazyview on the R536 / Sabie road

25°02'22.8"S 31°04'53.1"E

