



Rose Retreat & Spa



Body Treatments



Luxury Rasul

For 1 (30 mins - A therapist will assist you)

For 2 (45 mins)

Start this do-it-yourself treatment by exfoliating with a **Litchi & Rose Salt Scrub**, then apply a **Rose Clay Mud Mask** and enjoy a steam session to nourish and soften your skin. Retain the softness with a post-treatment application of **Rose Body Butter**.

R470

R600

Steam Session

R170

Jacuzzi

R200

Executive Stress Relief

60 mins

90 mins

R650

R965

Let your therapist guide you to complete relaxation with some breathing exercises, followed by a **Hand & Foot Treatment**. Complete the experience with a **Back, Neck & Shoulder Massage**. This is sheer luxury!

Coffee Body Exfoliation

75 mins (without the Macadamia Massage)

2 hours

R750

R1300

Start with a 20 min **Rose Quartz Steam Session** in preparation for the invigorating coffee scrub experience, which will leave your skin naturally soft. Rinse off with the warm water of the **Vichy Shower**. This is followed by a delightful hot **Macadamia Compress Full Body Massage**.

Manicures

Deluxe Fiesta Manicure (60 mins)

Express Manicure (30 mins)

R440

R310

Pedicures

Deluxe Florentine Pedicure (60 mins)

Express Pedicure (30 mins)

R510

R380

Gelish

Gelish Deluxe for Hands (60 mins)

Gelish Deluxe for Feet (60 mins)

R380

R460

Beauty Add-On's

*French paint with Mani/Pedi or Gelish
(15 mins)*

Re-Varnish (30 mins)

Gelish Re-Varnish (45 mins)

Soak off existing Gelish (30 mins)

Hand / Foot Massage (20 mins)

Paraffin Dip (20 mins)

Medi Heel for dry, cracked heels (20 mins)

R75

R210

R145

R145

R310

R160

R150

Waxing

Bikini Wax (30 mins)

Full Leg Wax (45 mins)

Lip & Chin Wax (30 mins)

Underarm Wax (30 mins)

Arm Wax (30 mins)

R200

R220

R150

R150

R200



Nail Lounge



Summerfields Soap Massage & Exfoliation (2 hours)

R1100 p.p

Start this treatment with A 20 minute **Rose Quartz Steam Session**. You will receive a **Dry Body Brushing** which exfoliates and softens the skin. This is followed by an invigorating **Soap Massage** -a bubble and foam experience to remember! You will be rinsed off with the warm water of the **Vichy Shower** and end off the session with an application of our aromatic **Rose Body Butter** which will leave you feeling rejuvenated. This treatment is perfectly suited to a couple's experience.

Summerfields Soothing Relief (45 mins)

R600

Whether you have sensitive, irritated or sunburnt skin, feel the relief and cooling effect of our **Cucumber & Banana Leaf Wrap**, followed by a nourishing application of **Rose Body Butter**.



Summerfields Natural Signature Facial (90 mins)

R910

Indulge in this unique Summerfields facial where only natural ingredients are used to cleanse, exfoliate, and nourish your skin. The facial will be preceded by a 30 min **Back and Neck Massage** that features a hot compress and natural products expertly chosen for your skin type. Enjoy either a **Scalp or Foot Massage** while the mask is left to soften your skin whilst you absorb all the natural benefits it has to offer.

Summerfields Journey for Winter:

R2250

(3.5 hours)

Start this session with a 10 min **Rose Quartz Steam Session**. After experiencing a full body **Coffee Exfoliation**, you are wrapped with rose petals and macadamia oil inside fresh banana leaves to smooth and hydrate your skin. Whilst comfortably cocooned, you will receive a **Natural Signature Facial** and have the treatment end off with a **Macadamia Compress Full Body Massage**.

Summerfields Journey for Summer:

R2250

(3.5 hours - Please bring your own swimwear)

This begins with the **Hydro Walk** where you'll experience water in different volumes and at various temperatures. After experiencing a full body **Coffee Exfoliation**, you are wrapped with rose petals and macadamia oil inside fresh banana leaves to smooth and hydrate your skin. Whilst comfortably cocooned, you will receive a **Natural Signature Facial** and have the treatment end off with a relaxing **Full Body Swedish Massage**.

A Touch of Nature

R2750

(4.5 hours)

Allow our spa therapists, with the help of Mother Nature to show you the path to inner healing. The treatment begins with a **Coffee Exfoliation** before you are wrapped in banana leaves, cocooned in papaya pulp and rose petals. Lying in this blissful state, receive a **Natural Signature Facial** leaving your skin rejuvenated from top to toe without encountering any chemical products. The luxurious experience continues with a **Full Body Aromatherapy Massage** and ends with a **Mini Manicure & Pedicure**.

Add-On's

You may request the pleasure of **Hot/Cold Stones** or **Soy Candles** to be added to any massage of your choice. R150

Summerfields Packages



Duke Gin & Duchess Spa Package (2.5 hours - Romancing the Duke of Summerfields)

R1500 p.p

This treatment begins with a tantalising **Duke Cocktail** welcome drink, after which you will be invited to indulge in a 20 min **Rose Geranium Infused Steam Session**. You will receive a rejuvenating **Litchi Peel and Macadamia Body Oil Exfoliation** followed by a **Litchi Pip and Macadamia Milk Mud Wrap** with Rose Geranium Leaves to hydrate and nourish your skin. You'll then be rinsed off with the soothing warm water of the **Vichy Shower** and your treatment will end with a relaxing full body **Macadamia oil Massage**. On your departure, stop by at our tranquil gin bar to enjoy a **Duke Gin Sundowner** before heading home.

Eden Romantica (2 hours - Couple's Package. Please bring your own swimwear)

R2300 per couple

Whether it's a special occasion or a celebration of love, we can guarantee total relaxation and harmony in the treatment room. Begin your seductive journey with a relaxing **Back & Neck Massage**, followed by a **Scalp Massage** and end off with a **Hand & Foot Treatment**. Next, enjoy our signature hydrotherapy experience - the **Hydro Walk**. This will leave you at the Jacuzzi where you can enjoy a fruit platter and a bottle of sparkling wine in privacy.

Swedish Full Body Massage (60 mins)
Back and Neck Massage (30 mins)
Deep Tissue Massage (60 mins)

R720

R490

R830

Aromatherapy Full Body Massage
(60 mins)

R990

Bring about well-being with a blend of essential oils specifically selected for your unique concerns. You may choose a blend for relaxation or invigoration - to help combat exhaustion.

Summerfields Stone Massage
(60 mins)

R830

Choose between **Hot Basalt Stones** for cooler days, and the icy **Cold Rose Quartz** to cool your body in the Lowveld heat.

Reflexology
(45 mins)

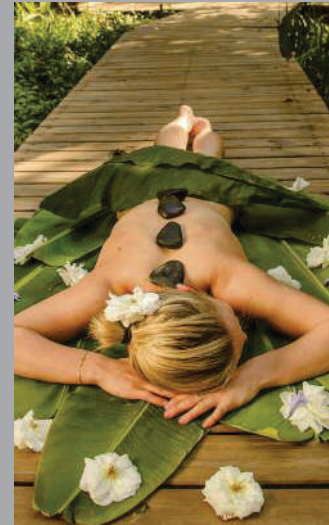
R490

Experience how this massage technique, performed on the feet, relieves tension throughout the body whilst balancing both body and mind.

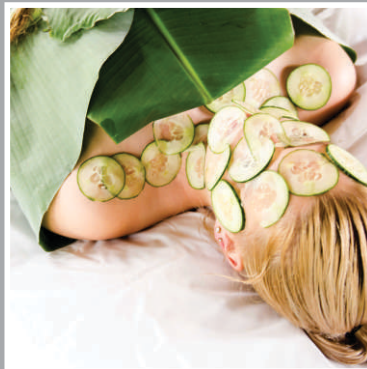
Soy Candle Massage:
(60 mins)

R990

You are massaged with the melting wax of a **Soy Candle** which has **Aromatherapy** as well as heat benefits and is your gift to take home after the treatment.



Holistic Body Packages



Barefoot Luxury

Summerfields Rose Retreat & Spa

Hazyview, Mpumalanga
5km outside Hazyview
on the R563 / Sabie Road
25°02'22.8"S 31°04'53.1"E

Reservations: 087 231 0112
Spa Mobile: 082 610 4708
spa@summerfields.co.za
www.summerfields.co.za